



*Washington Department of*  
**FISH AND WILDLIFE**

# *YAKIMA CONSTRUCTION* *SHOP*

RAY GILMOUR





# *Upper Wolf Creek*

*Converted from hydraulic to  
gear drive*



Washington Department of  
FISH AND WILDLIFE





7. 13. 2001















During a past Fish Screen & Passage Workshop in Idaho. The tour took us to a site that had multiple drum screens. They had two drum screens being driven by one paddlewheel. There was the ability to isolate the paddle wheel for maintenance without shutting the system down.

I asked Jim (Idaho) for some information like drawings, pics, etc.





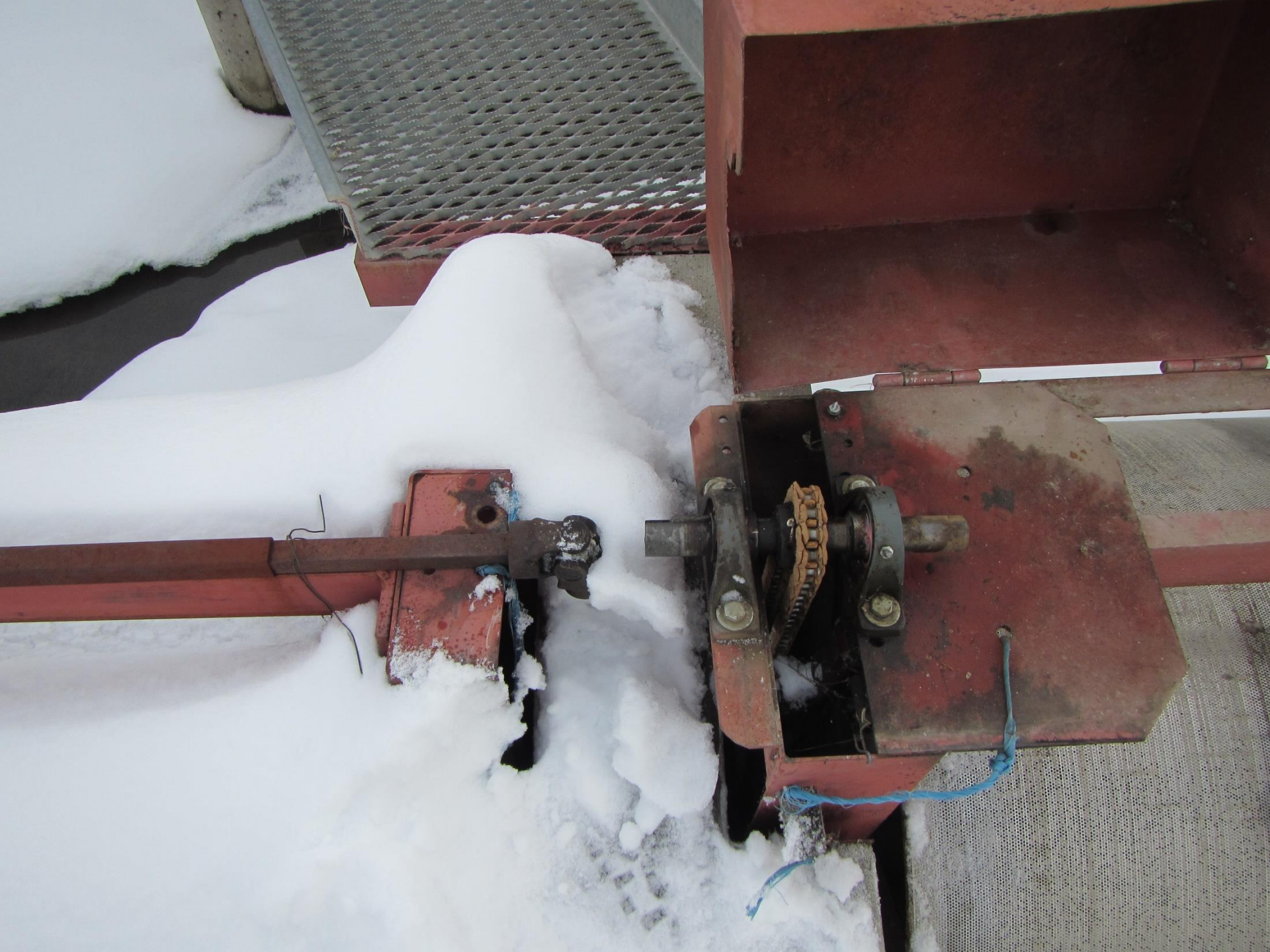












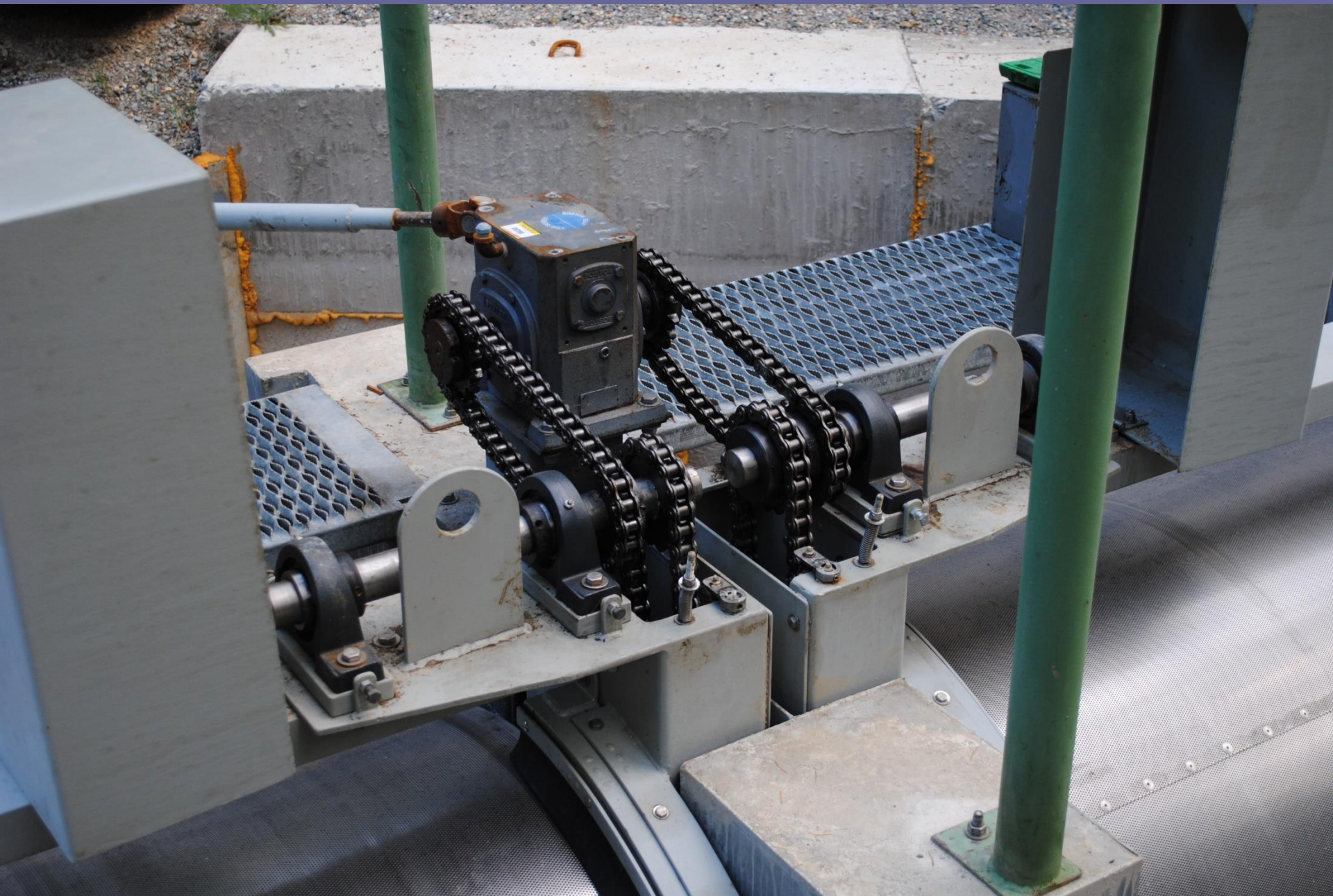


























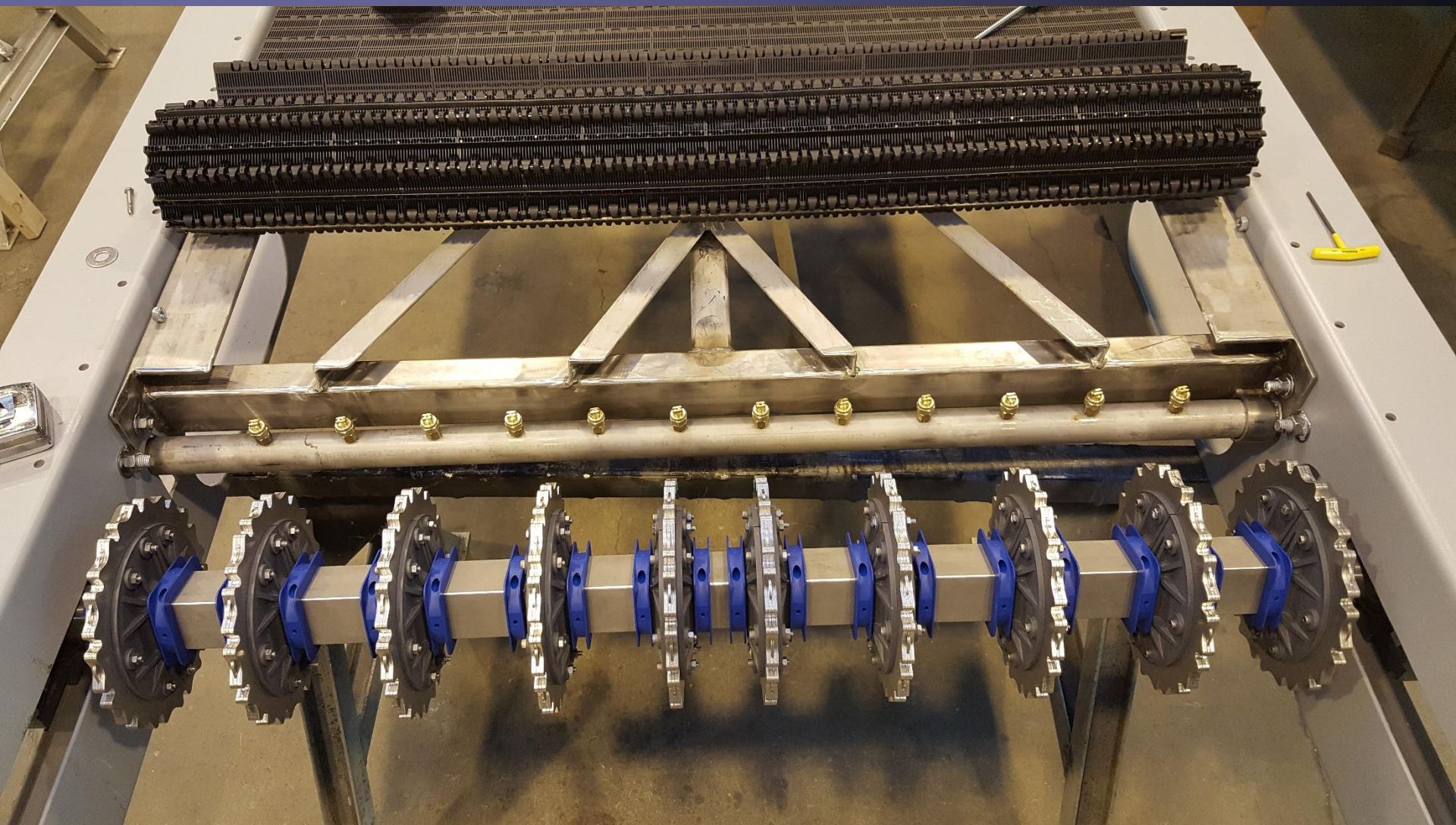
# *External Belt Screen Spray Bars*



Washington Department of  
FISH AND WILDLIFE

RAY GILMOUR

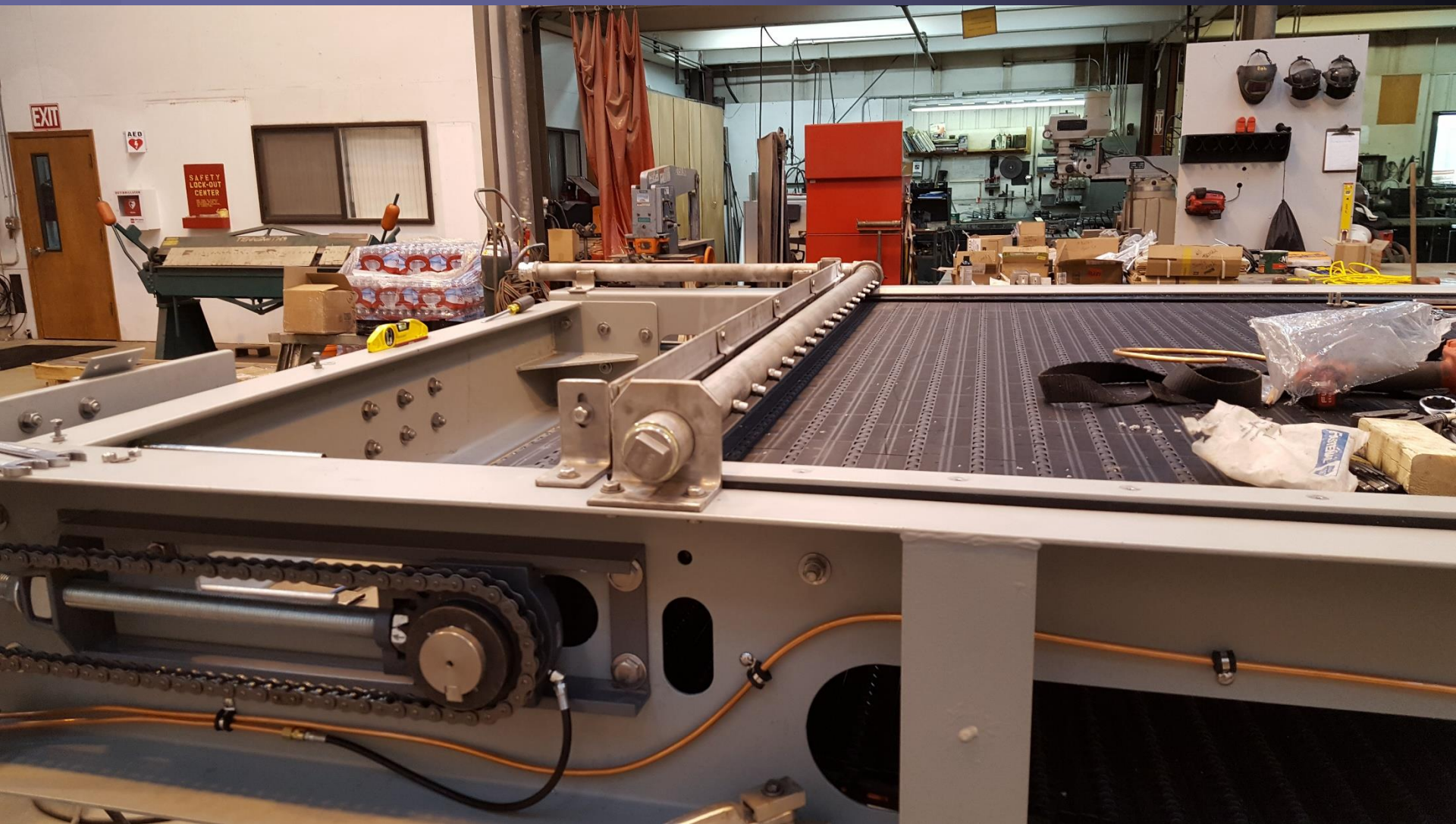
















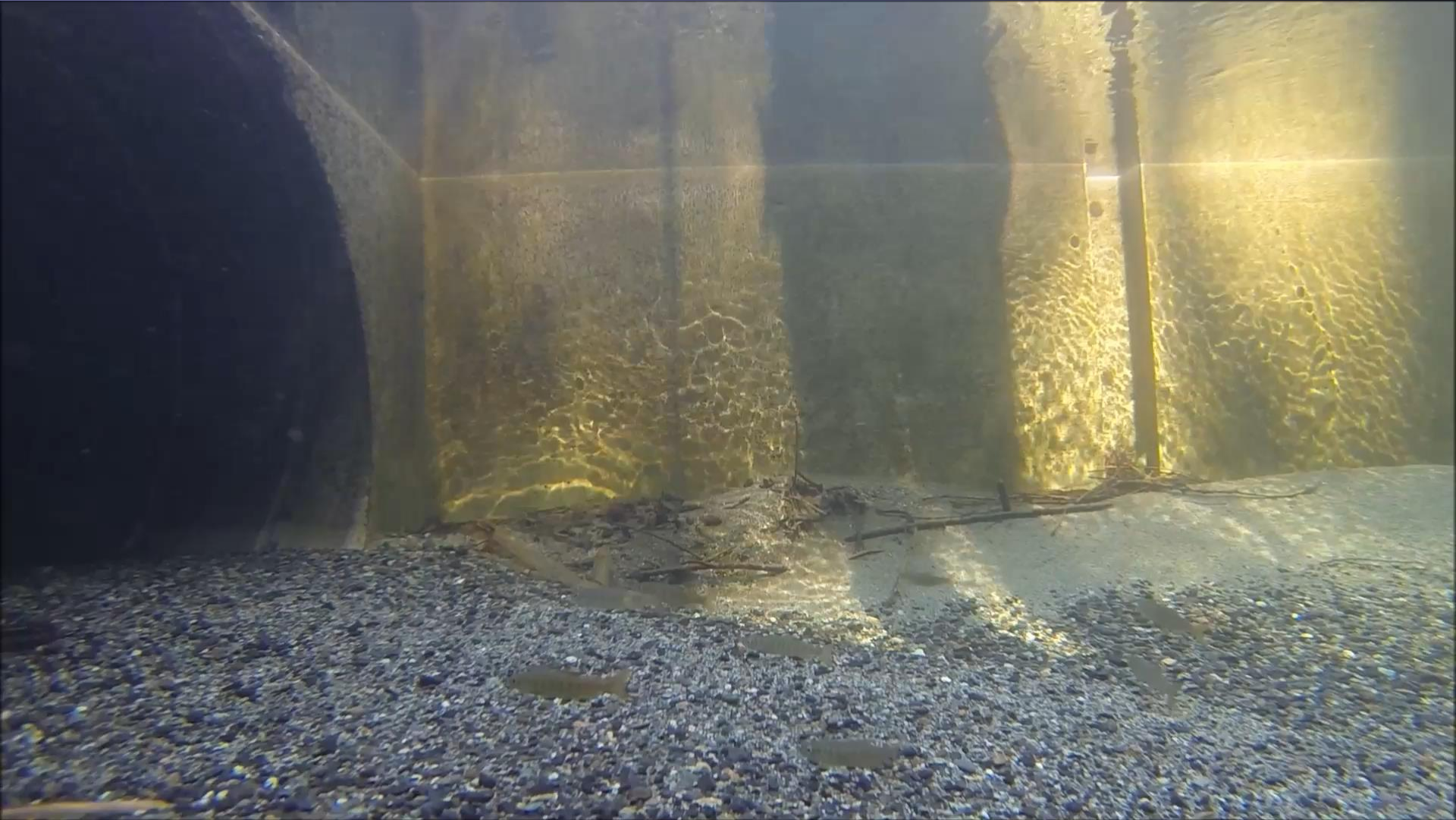
















































10/04/2012













DRY WEIGHT  
3500 LBS.

DRY WEIGHT  
3500 LBS.

2.21.2001





2.14.2001



